





Jog Shuttle For Dell Precision Workstations

The Jog Shuttle feature allows you to configure a Dell Touchpad shortcut to perform complex and redundant tasks involving multiple keystrokes or mouse click combinations.

Example: Invoking the Delete Browsing History dialog box involves pressing <CTRL> + <SHIFT> + in Internet Explorer. This action can be replicated by pressing a single control on the touchpad.

 **NOTE:** The Jog Shuttle feature may not be included if you did not order it.

 **NOTE:** The Jog Shuttle feature is available only on specific Dell Precision workstations.

Accessing The Jog Shuttle


Jog Shuttle feature is part of the Dell Touchpad utility. You can use the Mouse Control Panel or System Tray to launch the Dell Touchpad utility.

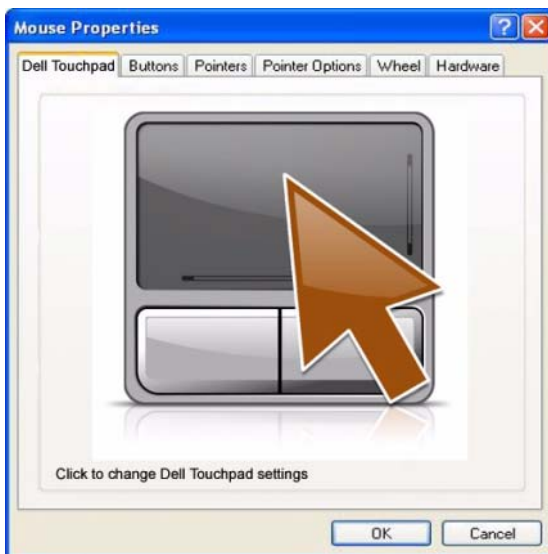
Launching Dell Touchpad Using System Tray

- 1 Double-click the Touchpad icon to launch the Dell Touchpad window.

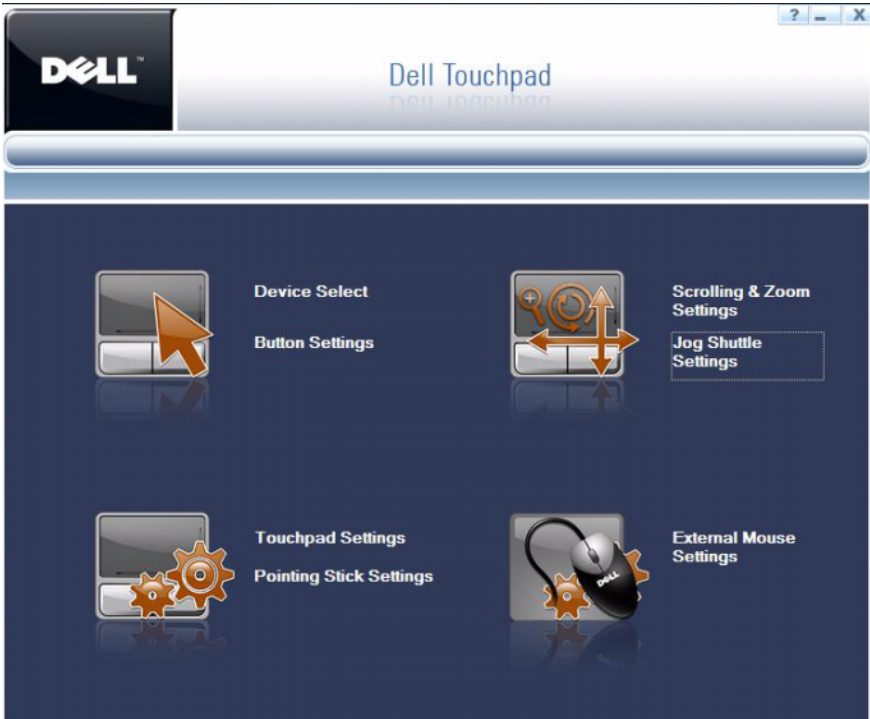


Launching Dell Touchpad Using Mouse Control Panel

- 1 Click  → Control Panel → Mouse. The Mouse Properties window appears.



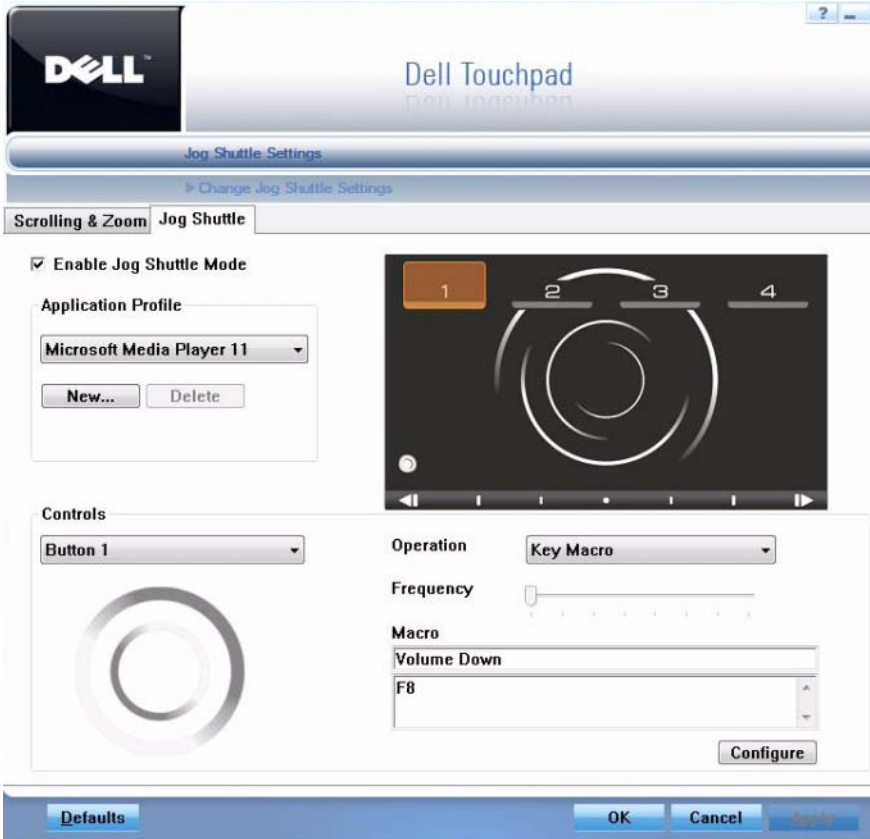
- 2 On the **Dell Touchpad** tab, click the large touchpad icon to launch the Dell Touchpad window.
- 3 The **Dell Touchpad** window appears.



Enabling Jog Shuttle

To enable Jog Shuttle using Dell Touchpad:

- 1 On the Dell Touchpad window, click Jog Shuttle Settings.



- 2 Click Enable Jog Shuttle Mode.

Configuring Jog Shuttle

You can configure the Jog Shuttle by selecting an application profile and control, and recording a corresponding macro. The options displayed in the Operation drop-down list depend on the selection of the **Profile** and **Controls**.

The following table displays the controls and corresponding operations.

Selecting	Displays
Button 1 — 4	Key Macro and Mouse Macro
Jog Right, Jog Left, Shuttle Left or Shuttle Right	Key Macro, Mouse Macro and Scrolling

- 1 On the **Jog Shuttle** tab, select the application from the **Application Profile** drop-down list.



NOTE: You can also add and delete application profiles if required. For more information, see "Adding And Deleting Application Profiles" on page 15.

- 2 Select an option from the **Controls** drop-down list.
- 3 Select *Key Macro* from the **Operation** drop-down list.
- 4 Click **Configure**. **Record a Sequence of Keystrokes** dialog box appears.



- 5 Click **Start**.
- 6 Press the keystrokes that will perform an action.

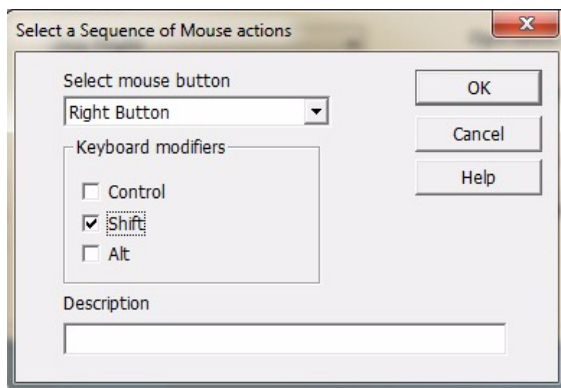
- 7 Click **Stop**.
- 8 Type a name in the **Description** field.
- 9 Click **OK**. The macro is recorded and displayed in the Macro section.

Example: Invoking the Delete Browsing History dialog box in Internet Explorer

- 1 Select the following:
 - **Application Profile:** Internet Explorer
 - **Control:** Button 1
 - **Operation:** Key Macro
- 2 Perform steps 4 and 5, press <CTRL> + <SHIFT> + .
- 3 Perform steps 7 through 9. The macro is defined.

Configuring A Mouse Macro

- 1 On the **Jog Shuttle** tab, select the application from the **Application Profile** drop-down list.
- 2 Select an option from the **Controls** drop-down list.
- 3 Select **Mouse Macro** from the **Operation** drop-down list.
- 4 Click **Configure**. Select a **Sequence of Mouse actions** dialog box appears.



- 5 Select an option from the **Select mouse button** drop-down list.
- 6 Select the **Keyboard modifiers** (optional).
- 7 Type a name in the **Description** field.

- 8 Click OK. The macro is recorded and displayed in the Macro section.

Configuring The Scrolling Operation

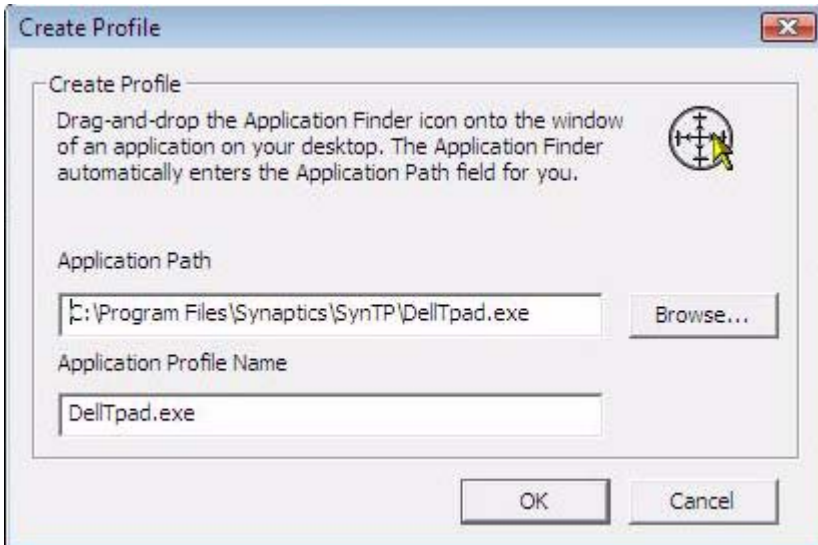
- 1 On the **Jog Shuttle** tab, select an option from the **Application Profile** drop-down list.
- 2 Select an option from **Controls** drop-down list. (last four options)
- 3 Select **Scrolling** from the **Operation** drop-down list.
- 4 Configure the **Frequency** using the slider.
- 5 Click OK.

Adding And Deleting Application Profiles

Jog Shuttle allows you to add new applications profiles.

To create a profile:

- 1 On the **Jog Shuttle** tab, click **New**. The **Create Profile** Window appears.
- 2 Click **Browse** and select the application path.



- 3 Alternatively, drag the **Drag and Drop Application** finder icon  over the application you want to add. The path appears in the application path field.


Example:


- 1 Open an **Internet Explorer** window.
- 2 Drag the icon over the Internet Explorer Window.
- 3 The path `C:\Program Files\Internet Explorer\iexplore.exe` appears in the **Application Path** field and `iexplore.exe` appears in the **Application Profile Name** field.

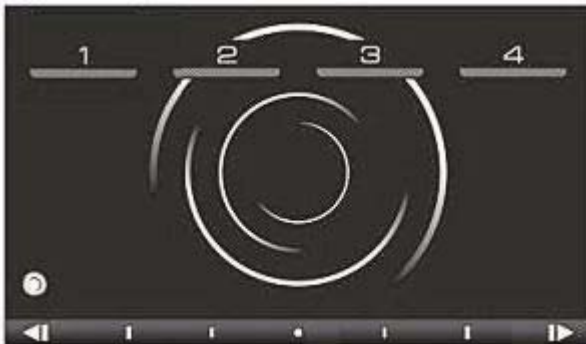
To delete a profile:


- 1 On the **Jog Shuttle** tab, select an option from the **Application Profile** drop-down list.
- 2 Click **Delete**.

Using The Jog Shuttle

 **NOTE:** Configure the profile with the required control and operation before proceeding.

- 1 Press the Jog Shuttle icon  on the bottom left corner of the touchpad.
- 2 The back-lit touchpad is visible with the controls.
- 3 Open the application. Example: Internet Explorer.
- 4 Press the control. The task defined for that control is performed.



 **NOTE:** All regular touchpad buttons and scrolling features are disabled if Jog Shuttle is active.

Applications Supported By Jog Shuttle

- Adobe Acrobat Professional 7.0 and 8.0
- Adobe Audition 2.0 and CS3
- Adobe Encore DVD 1.5, DVD 2.0 and CS3
- Adobe Illustrator CS2 and CS3
- Adobe Premiere Pro 1.5, 2.0 and CS3
- Adobe Soundbooth CS3
- Autodesk 3D Studio Max 2009
- Cakewalk Sonar Producer Edition 7.0
- Cakewalk Sonar Studio Edition 7.0
- Microsoft Internet Explorer 6.x and 7.x
- Windows Movie Maker
- Adobe Acrobat Reader 7.0 and 8.0
- Adobe After Effects 6.5, 7.0 and CS3
- Adobe Flash CS3
- Adobe Photoshop 7.0, CS2 and CS3
- Apple iTunes
- Apple QuickTime
- Autodesk Maya 8.0
- Cyberlink Power DVD 8.0
- DigiDesign Pro Tools
- Microsoft Media Player 10.x and 11.x
- Windows Photo Gallery

Information in this publication is subject to change without notice.

© 2010 Dell Inc. All rights reserved.

Reproduction of these materials in any manner whatsoever without the written permission of Dell Inc. is strictly forbidden.

Trademarks used in this text: Dell™, the DELL logo, Dell Precision™ are trademarks of Dell Inc. Microsoft® and Internet Explorer® are trademarks or registered trademarks of Microsoft Corporation in the United States and/or other countries.

Other trademarks and trade names may be used in this publication to refer to either the entities claiming the marks and names or their products. Dell Inc. disclaims any proprietary interest in trademarks and trade names other than its own.